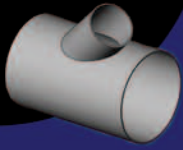
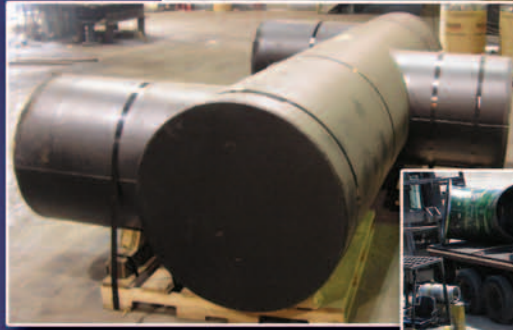


# MITERED PIPE FITTINGS



Standard fittings to AWWA C208  
dimensions.

- Specials to print
- Reinforcing pads
- Crotch plates
- Flanges

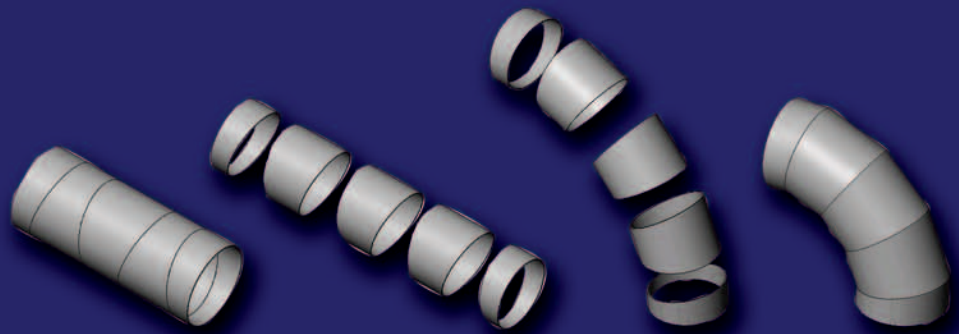


**Fittings complete.**

- Welded fittings.
- Dye penetrant tested
- Ready for the job site

**Fitting components, ready for your shop fabrication.**

- Engineering developments
- Shape cut plate
- Rolled and tacked
- Braced for shipping
- Line up tabs for easy shop fit up
- You do the welding



**“If Its Round, Call Arntzen”**

**800-957-7655**

Fax 815-334-0778

[www.ArntzenRolling.com](http://www.ArntzenRolling.com)